

## BOLSTER Toolbox

### Just Transition Monitoring Tool – Participatory Approach

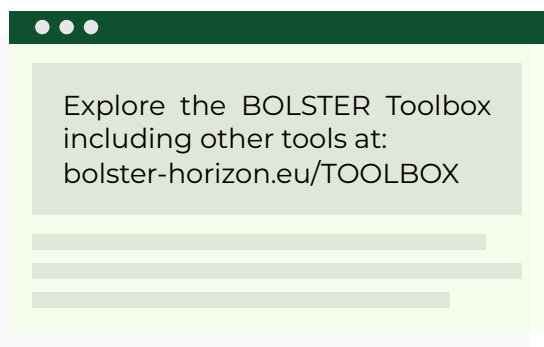


This project is funded by the European Union under the Grant Agreement n.º 101069586. Views and opinions expressed are however those of the author(s) only and do not necessarily reflect those of the European Union or CINEA. Neither the European Union nor the granting authority can be held responsible for them.



## About this Tool and the BOLSTER Toolbox

This Tool informs about the BOLSTER approach monitoring Just Transition with the involvement of community members and local stakeholders and offers practical guide for application of this approach. It is grounded in the concepts and participatory principles applied in the BOLSTER project. More detailed guidelines and information on the approach presented in this Tool can be found in the Detailed Guide that can be accessed [HERE](#)

This Tool is part of the BOLSTER Toolbox, developed within the framework of the BOLSTER project – Bridging Organizations and Marginalized Communities for Local Sustainability Transitions in Europe. The Toolbox offers several participatory tools designed to support public bodies, civic organizations, and industry stakeholders in advancing a just and inclusive green transition at the local levels.



### REGIONS WHERE THIS TOOL WAS TESTED

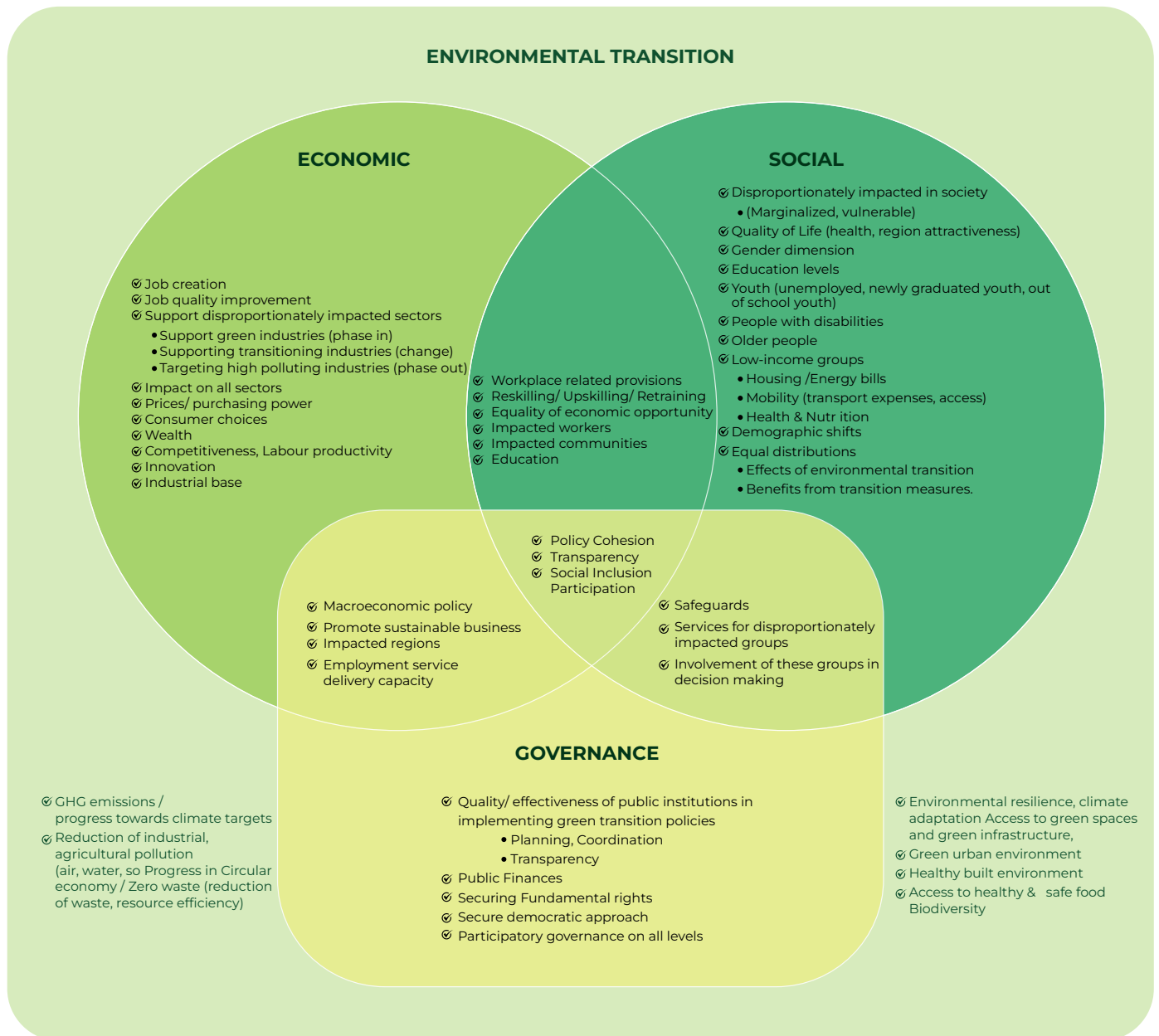
-  Study region
-  Target region



# Monitoring of Just Transition: conceptual framework from BOLSTER

Drawing from the conceptual mapping, BOLSTER proposed a Just Transition monitoring framework structured around four key dimensions:

- ✔ Economic
- ✔ Social
- ✔ Environmental
- ✔ Governance





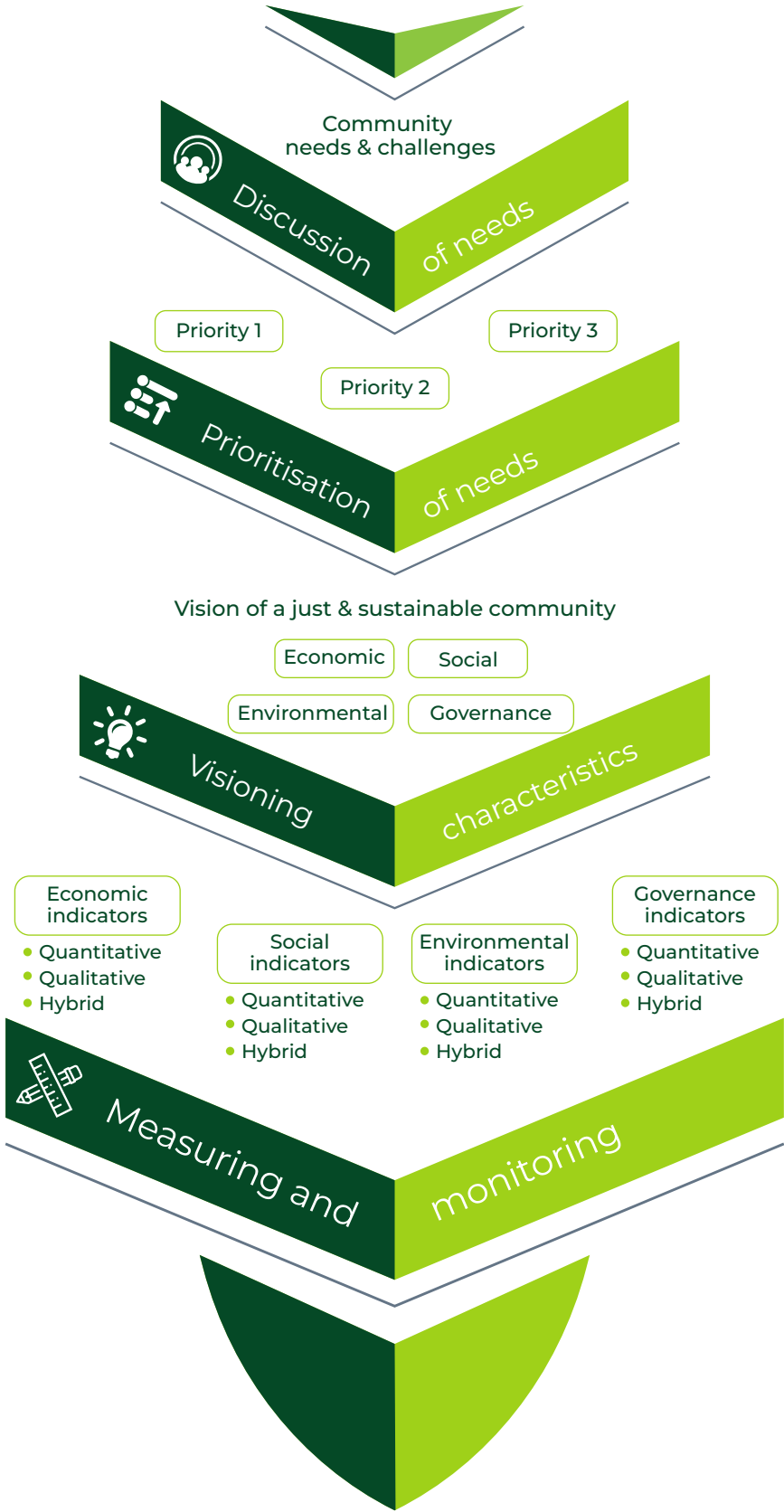
## Why use a participatory approach in monitoring of Just Transition?

- ✔ Ensures JT monitoring reflects both quantitative and qualitative progress.
- ✔ Complements official statistics with local, context-specific insights.
- ✔ Engages stakeholders directly affected by transition measures.
- ✔ Empowers communities by focusing on their needs and priorities.
- ✔ Helps local authorities to better understand local needs and co-develop solutions.
- ✔ Fills data gaps where official sources are lacking.
- ✔ Captures lived experiences that numbers may overlook.
- ✔ Provides actionable input for shaping inclusive JT policies.

# Embedding the monitoring in the community empowerment processes in BOLSTER

Central to BOLSTER's approach is the active involvement of marginalized groups through participatory methods. These provide a platform for communities to voice their current concerns, set priorities for the transition process, and envision a just society on their own terms. This inclusive process is guided by the BOLSTER methodology outlined in the guideline "Visioning the Transition that Leaves No One Behind". The figure below illustrates how the monitoring component in the BOLSTER project is connected to discussions on local needs and challenges, priority setting, and visioning.

Figure 1: Connecting participatory processes in the target communities of BOLSTER



This envisioned future reflects a collective perspective on what a just and sustainable community should look like. Before shaping the vision, community members and stakeholders are invited to identify local needs and challenges —especially those affecting marginalized groups within their community, city, or region. The Visioning process is central to identifying the core characteristics of a just and sustainable society. Each characteristic is clearly defined and linked to measurable indicators, typically organized under four dimensions: social, economic, environmental, and governance. Achieving the envisioned future requires meaningful change—implemented through local actions, projects, policies, and measures. A successful transition ensures that the benefits are shared by all, particularly marginalized groups.

While the characteristics of the Vision are defined as positive descriptors and as the future final goal picture, it is also important to:



Reflect on the current needs/ state of play with justice and sustainability (to have a baseline in the monitoring of the change)



Acknowledge and capture the process of transition towards the vision by addressing the challenges.

Along with that it is important to discuss and suggest indicators that reflect the complexity of JT in each local context. Namely:



Vision indicators – which reflect the Vision, can also be seen as targets to attain in setting a just and sustainable community/city/region



Baseline indicators – which reflect the current state of play that contrasts the Vision and present indicators that measure the same aspects as in the Vision to ensure comparability between now and in future.



Progress indicators – that can help to measure the transition or change from state of place / baseline towards the Vision. It will be logical to connect them with the relevant vision and baseline indicators. But it is also possible to introduce other indicators that can measure resources, inputs facilitating the progress.

# Guiding the discussion from visioning to developing the local JT indicators.

Vision of a just & sustainable community



## Guiding questions

- ✔ What justice means for you?
- ✔ What just transition means for you?
- ✔ How do you picture your community/ city/ region being just and sustainable?  
What would this mean for you from:
  - ... economic perspective?
  - ... social perspective?
  - ... environment perspective?
  - ... governance perspective? (responsive, inclusive, efficient transparent, participatory, fair,)

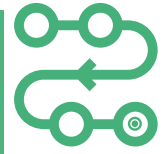
Current situation in the community (baseline)



## Guiding questions

- ✔ What is the initial or current state of play with justice and sustainability in your community/ city / region?  
How does it compare with the Vision that you have discussed and pictured?
- ✔ Assess the situation from the:
  - ... economic perspective
  - ... social perspective
  - ... environment perspective
  - ... governance (responsiveness, inclusiveness, efficiency, transparency, participation, fairness)

Process of transition towards the vision



## Guiding questions

- ✔ How would you foresee the transition process?
- ✔ What changes should take place?
- ✔ How many years would it need to achieve this vision?  
How would you measure the transition or change towards the Vision?

## Vision Indicators

Suggest indicators through discussion\*

### Economic

Majority (e.g. %80) of industries, businesses in city are green  
Diverse job market with fair pays for all groups.

### Social

Immigrant groups are well integrated in the local economy & community  
The city is safe for women and children

### Environmental

All neighbourhoods have green/park zones  
Air quality in the city is of high standards  
City has well-functioning, green and accessible public transport

### Governance

Local government is responsive and fair in addressing social issues  
The decision-making in municipality are inclusive for all groups and transparent

## Baseline indicators reflecting the current status

What is the current situation on each indicator? \*

### Economic

Hardly any industries, businesses in city are green.  
Poor job market with little job openings and not fair pays

### Social

Immigrant groups weakly integrated in the economy and society  
The city not sufficiently safe for women and children

### Environmental

2 in 10 neighbourhoods has green/park zones  
Air quality in the city suffers from traffic or other causes  
City's public transport meets demand, but relies on air polluting vehicles

### Governance

Local government is not always responsive in addressing social issues  
The decision-making in municipality is not always transparent and inclusive

## Transition indicators to monitor change/progress

How would you measure the change towards the vision? \*

### Economic

Increase of n of new green companies  
N of news green jobs created annually

### Social

More immigrants learn language / get jobs / get professional training.  
Introductions of XYZ measures to address safety

### Environmental

Opening of new parks in last year(s)  
Air quality standards improvement (due to xyz)  
New green public transport line opened (tram, bike line..)

### Governance

Local government has started looking into problem xyz (previously ignored)  
Transparency has increased over decisions on specific issues or all issues

## Using the proposed indicators

- ✓ Through inclusive community discussions, the envisioned indicators and insights can be integrated of the local JT roadmap, strategy, and plans.
- ✓ Proposed indicators can be used in evaluating regional or national JT plans, complementing official monitoring tools.
- ✓ During subsequent evaluations, community members should be involved again to assess progress. If needed, they can revisit the shared vision and baseline indicators.
- ✓ Qualitative and quantitative results should be recorded to capture essence of community feedback.
- ✓ Ranking, rating, and grading methods can encourage conversations on observed changes and their causes.
- ✓ The careful selection of indicators from the proposed pool may also find application in monitoring and evaluating other social, environmental and economic projects and initiatives.

This approach not only enriches the local JT initiatives but also contributes to a broader landscape of sustainable development and progress assessment.





# BOLSTER



## Goal of the project

BOLSTER project aims to understand how marginalized communities are affected by EGD-related policies and whether involving them in decision-making processes increases support for transition plans. Learn more about the project and results at [www.bolster.eu](http://www.bolster.eu)



This project is funded by the European Union under the Grant Agreement n.° 101069586. Views and opinions expressed are however those of the author(s) only and do not necessarily reflect those of the European Union or CINEA. Neither the European Union nor the granting authority can be held responsible for them.